

PIT BULL® 14

1" IPS - 4" DIPS (32MM - 110MM)



MADE FOR

UNDERGROUND
CONSTRUCTION



STANDARD FEATURES

- ✓ Hand-operated
- ✓ Lightweight and durable
- ✓ 15-to-1 mechanical advantage
- ✓ Patented Centerline Guidance System for equal distribution of force around the joint
- ✓ Semi-automatic locking mechanism to maintain force during the cooling cycle
- ✓ Hard-anodized clamp knobs to minimize force required to clamp and round pipe
- ✓ Serrated jaws and inserts keep pipe from slipping during fusion
- ✓ Electric facer design
- ✓ Reversible jaws, clamp knobs, levers and facer allow operator to fuse from either side of the machine
- ✓ Thrust-bearing equipped clamp knobs to minimize torque required to clamp and round the pipe
- ✓ Thermostatically-controlled heater to provide constant fusion temperature
- ✓ ISO-compliant industrial Teflon-coated heater plates
- ✓ Compact and durable

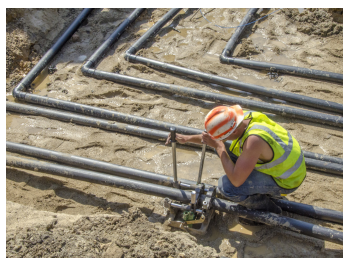


The McElroy Pit Bull 14 is a compact, lightweight, highly reliable and rugged fusion machine that fuses 1" IPS to 4" DIPS (32mm to 110mm) pipe.

The Pit Bull 14 incorporates McElroy's patented Centerline Guidance System, and is designed to butt fuse tees, elbows and other fittings with consistent, high-quality results. The machine's semi-automatic locking cam system maintains force during the cooling cycle.

Features include reversible jaws, clamp knobs and facer. Add the optional 4-wheel cart with outrigger pipe supports or a manual fusion machine stand that raises the machine to a comfortable working level.

ADDITIONAL IMAGES



SEE SECOND PAGE FOR DETAILED SPECIFICATIONS



McELROY

PIT BULL® 14

1" IPS - 4" DIPS (32MM - 110MM)

SPECIFICATIONS

MODELS		POWER		MACHINE DIMENSIONS	
A430101	120V	Minimum Power Requirements	3 kW	Machine Length	15.5" (393.7mm)
A430102	240V			Machine Width	16.5" (419.1mm)
		240V Heater	220-240V, 1,200 Watts, 50 Hz, 1 Ph	Machine Height	31.8" (807.7mm)
WEIGHTS				SHIPPING DIMENSIONS	
Carriage	35 lbs. (15.9 Kg)	120V Heater	100-120V, 1,200 Watts, 60 Hz, 1 Ph	Length	32" (812.8 mm)
Heater	10 lbs. (4.5 Kg)	240V Facer	220-240V, 50 / 60 Hz, 1 Ph, 3.5 Amps	Width	40" (1,016 mm)
Facer	21.6 lbs. (9.8 Kg)			Height	33" (838.2 mm)
Shipping Weight	105 lbs. (47.6 Kg)	120V Facer	100-120V, 50 / 60 Hz, 1 Ph, 7 Amps	INCLUDES	
		120V Heater Plug type	NEMA 5-15P	Fusion machine, heater, facer, insulated heater stand, 4" IPS/DIPS Master insert set, and screw /driver kit.	
		240V Heater Plug type	NEMA 6-15P		
		120V Facer Plug type	NEMA 5-15P		
		240V Facer Plug type	NEMA 6-15P		